

Cynomolgus LY6G6D Protein



Cat. No. LYD-CM16D

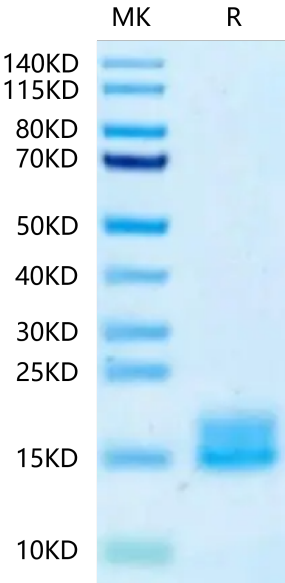
Description	
Source	Recombinant Cynomolgus LY6G6D Protein is expressed from HEK293 with His tag at the N-terminus. It contains Asn20-Ser104.
Accession	XP_014991478.1
Molecular Weight	The protein has a predicted MW of 10.22 kDa. Due to glycosylation, the protein migrates to 14-24 kDa based on Bis-Tris PAGE result.
Endotoxin	Less than 1 EU per µg by the LAL method.
Purity	> 95% as determined by Bis-Tris PAGE

Formulation and Storage	
Formulation	Lyophilized from 0.22 µm filtered solution in PBS (pH 7.4). Normally 8% trehalose is added as protectant before lyophilization.
Reconstitution	Dissolve the lyophilized protein in distilled water. Please refer to the Certificate of Analysis for detailed instructions.
Storage	-20 to -80°C for 12 months as supplied from date of receipt.-80°C for 3 months after reconstitution.Recommend to aliquot the protein into smaller quantities for optimal storage. Please minimize freeze-thaw cycles.

Background	
LY6G6D is a selectively expressed colorectal cancer antigen that can be used for targeting a therapeutic T-cell response by a T-cell engager.LY6G6D was identified as a selectively expressed CRC antigen that can be utilized to potently re-direct and activate cytotoxic T-cells to lyse LY6G6D expressing CRC using a TcE. This effect can be spread to target negative neighboring tumor cells, potentially leading to improved therapeutic efficacy.	

Assay Data

Bis-Tris PAGE



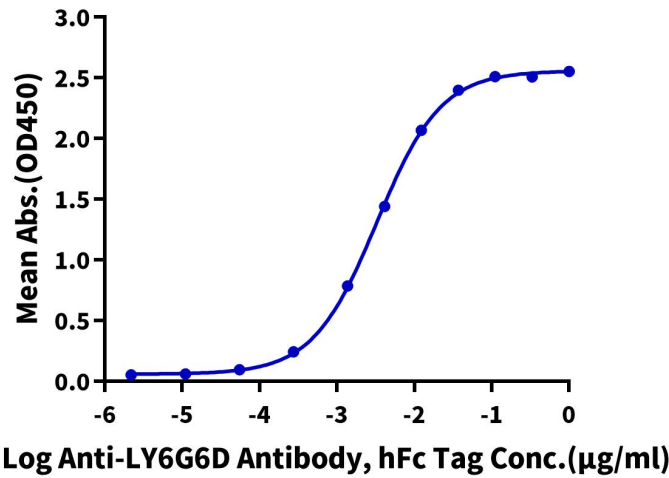
Cynomolgus LY6G6D on Bis-Tris PAGE under reduced condition. The purity is greater than 95%.

ELISA Data

Assay Data

Cynomolgus LY6G6D, His Tag ELISA

0.1µg Cynomolgus LY6G6D, His Tag Per Well



Immobilized Cynomolgus LY6G6D, His Tag at 1µg/ml (100µl/well) on the plate. Dose response curve for Anti-LY6G6D Antibody, hFc Tag with the EC50 of 3.3ng/ml determined by ELISA.